

Refugee Resettlement — HOW IT WORKS

Refugee resettlement in the United States is a federal program.

Each year in October, the President, in consultation with Congress, sets the number of refugees to be admitted for U.S. resettlement. Resettlement is then coordinated through the U.S. State Department and involves many federal divisions that provide security clearance.

The U.S. State Department works with nine national voluntary organizations that facilitate resettlement with help from nearly 200 nonprofit organizations in local communities that carry out direct support refugees need.

Our role is humanitarian. LSS helps refugees secure housing, enroll in school and English language classes, find jobs, offer cultural and safety orientation, tend to medical needs and connect to other community resources to help refugees start their new lives.

Here in Minnesota, resettlement is focused on family reunification, meaning that refugee arrivals are joining family members who are already here. Refugees who arrive in the U.S. wish to resettle near their families and where there are safe communities, good schools and job opportunities — not unlike the reasons why most people live where they do. Just like any U.S. resident, refugees are free to relocate to another community at any time.

Organizations like LSS rely on volunteers and philanthropic support to carry out this work. Congregations, businesses, foundations, civic groups and community volunteers all play a vital role in helping us carry out our mission to inspire hope, change lives and build community.

CONTACT US TODAY

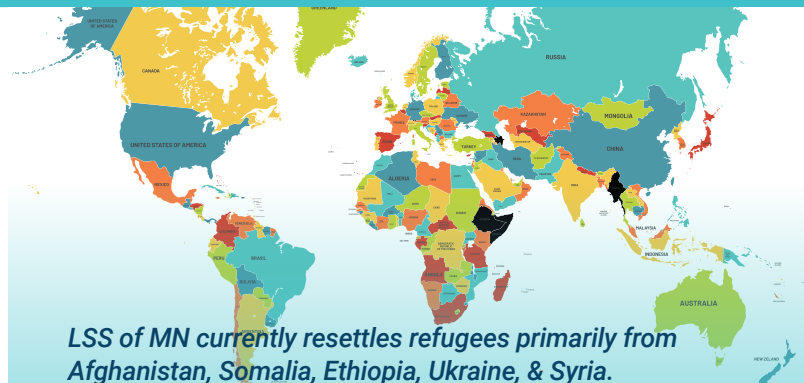
Get more info or donate

612.879.5258

email us at: refugee.services@lssmn.org

Refugee Services Office Locations:

Minneapolis 2400 Park Avenue Minneapolis, MN 55404	St. Cloud 2835 W Saint Germain St. Suite 550 St. Cloud, MN 56301
--	---



BY THE NUMBERS

- 32 million** Refugees worldwide in 2022
- 125,000** U.S. Refugee Admissions for fiscal year 2023 (Oct. 1, 2022 to Sept. 30, 2023)
- 9** National organizations coordinating resettlement nationwide
- 19** Minnesota ranking among states for number of refugees resettled
- 5** Resettlement agencies in Minnesota (LSS, Catholic Charities of Winona, Minnesota Council of Churches, International Institute, Arrive Ministries)
- 1,781** Refugees & Afghans assisted by Minnesota agencies in FY 2022 (Oct. 1, 2021 to Sept. 30, 2022)
- 248** Refugees & Afghans resettled by LSS in FY 2022
- 1,275** Dollars that each refugee receives to help them resettle (a federal, one-time grant)
- 1,100** Dollars that LSS receives per refugee to help them resettle
- 90** Days that LSS works with refugees when they arrive
- 12** Dollars per day that LSS receives to help a refugee
- \$659 billion** Estimated lifetime earnings of immigrants in Minnesota*
- \$793 billion** Estimated state and local taxes paid annually by immigrants in Minnesota*
**Minnesota Chamber of Commerce*